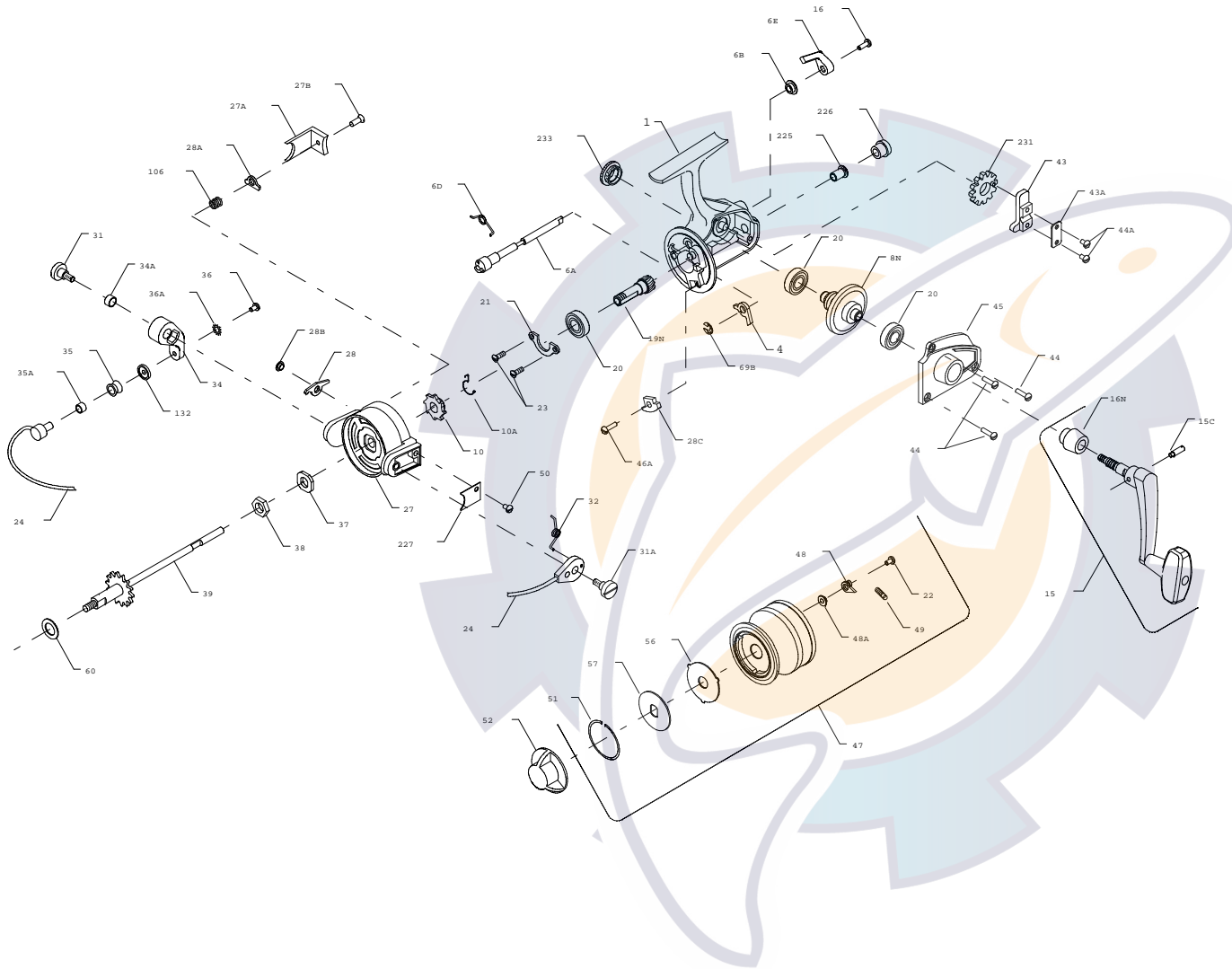




PARTS LIST FOR MODEL 4400SS



KEY

NO.	PART NO.	DESCRIPTION
1	001P4400	Housing
4	*004N4400	Dog
6A	006A4400	Eccentric
6B	006B750	Eccentric Liner
6D	006D710	Eccentric Spring
6E	006E750	Eccentric Lever
8N	008N4400	Main Gear
10	*010N4400	Ratchet
10A	*230N5500	Anti-Reverse Spring
15	015 4400	Handle (Complete)
15C	015C650	Handle Pivot Screw
16	016 910	Eccentric Screw
16N	016 4400	Handle Collar
19N	019N4400	Pinion
20	020 722	Ball Bearing
21	021 450	Bearing Cover
22	022 750	Spool Click Screw
23	023 750	Bearing Cover Screw (2 req.)
24	024 440	Bail Wire
27	027 440	Rotor
27A	027A440	Bail Trip Cover
27B	027B420	Rotor End Screw
28	028 440	Trip Lever
28A	028A440	Cam Lever
28B	028B440	Trip Lever Bushing
28C	028C440	Trip Cam
31	031 550	Bail Arm Screw
31A	031A450	Trip Arm Screw
32	032 440	Bail Spring
34	034 450	Bail Arm
34A	034A550	Bail Arm Bushing
35	035 704	Liner Roller
35A	035A704	Line Roller Bushing
36	036 750	Bail Stud Screw
36A	036A750	Lock Washer
37	037 450	Rotor Washer
38	038 550	Rotor Nut
39	039 440	Spool Shaft
43	043 440	Crosswind Block
43A	043A440	Crosswind Block Plate
44	044 704	Cover Screw (3 req.)
44A	044 4400	Crosswind Block Screw (2 req.)
45	045 4400	Housing Cover
46A	046A704	Screw (1 req.)
47	047 4400	Spool (Complete)
48	048 450	Click Tongue
48A	048A750	Click Tongue Washer
49	049 710	Click Tongue Spring
50	050 712	Bail Spring Cover Screw
51	051 4400	Retaining Ring
52	052 440	Drag Knob
56	056 440	Drag Washer-HT100 (3 req.)
57	057 440	Metal Keyed Washer (2 req.)
60	060 450	Thrust Washer (Teflon)
69B	069B4400	Retaining Ring
106	106 5500	Rotor End Spring
132	132 450	Roller Washer
225	225 440	Crosswind Shaft Bushing
226	226 450	Bushing Cap Screw
227	227 440	Bail Spring Cover
231	231 440	Crosswind Gear
233	233 440	Bearing Cover